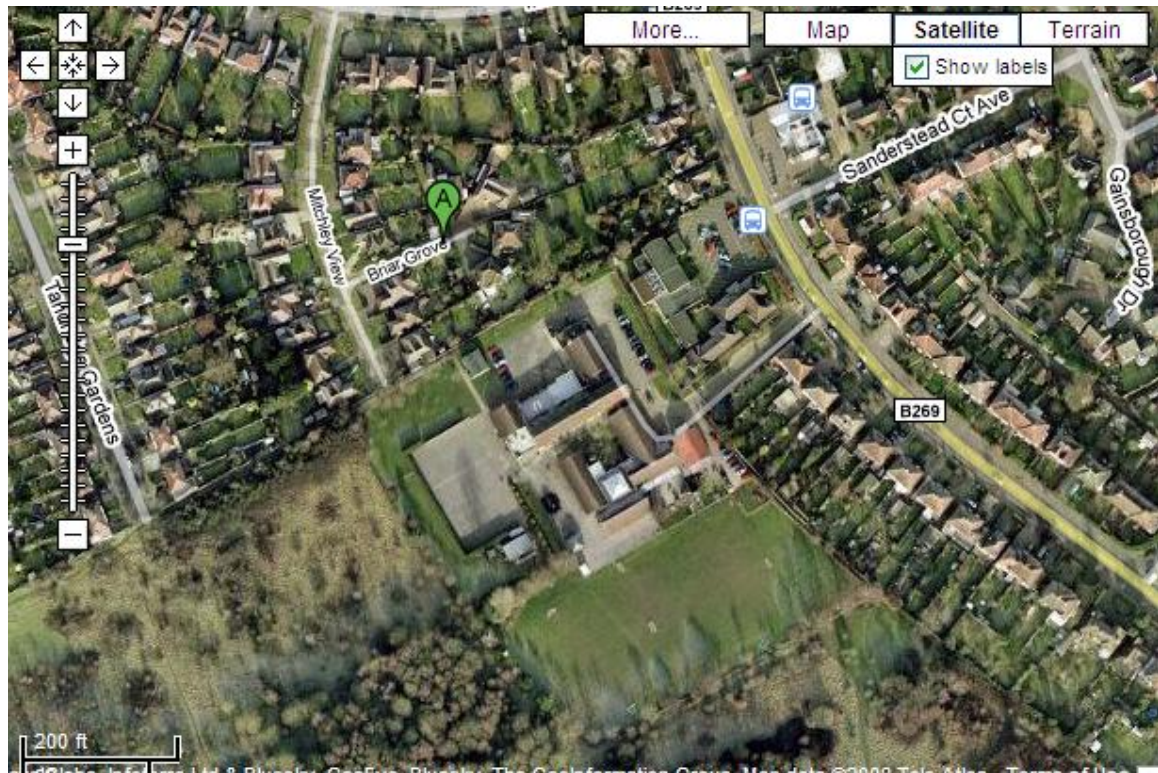


## ATWOOD PRIMARY SCHOOL'S SCHOOL TRAVEL PLAN



Aerial View of the school.

LEA/DfES Ref: 306/5202

Date: February 2009

(Updated July 2009)

Review February 2012

## **PART 1 - ABOUT YOUR SCHOOL**

### **DESCRIPTION OF THE SCHOOL:**

- Atwood Primary School is in Sanderstead; Atwood is a Foundation school.
- It is a large primary school with 470 pupils, 49 of whom attend the nursery part-time. The age range is from 3 – 11years. There are currently 3 statemented pupils one of whom has a physical disability. He is brought to school by car by one of his parents; he sometimes has to use a wheelchair and has also used a walking frame. There are 72 pupils on the SEN register. There are 63 members of staff including teachers, teaching assistants, administrative staff, lunch-time supervisors, cleaners and our site manager. We also have a number of regular visitors, especially peripatetic music teachers.
  - From September 2009 we will have an extra Reception class taking our pupil numbers to 502.
  - This will impact on travel and traffic to and from our school as these are 30 new families in addition to our current school population.
- Atwood is located on the Limsfield Road in Sanderstead; it also has an entrance from Tandridge Gardens. Limsfield Road is a very busy main road, especially at peak times, with links to Croydon, Purley and Warlingham. Traffic flow has increased considerably in the last few years due to the opening of major supermarkets in the local area. There is a small parade of shops within 100 metres of the main school entrance; the local area is largely residential although in the last few years a Majestic Wine Warehouse has opened almost opposite the school and a Waitrose supermarket a further few hundred metres to the north.

Our Limsfield Road entrance is used by more than half of our pupils, many of whom have to cross the road using the Pelican crossing which is almost directly outside the school. This is our main pedestrian entrance as well as our only vehicle entrance which can be difficult to access or exit due to the traffic on Limsfield Road.

Our other pupils use the entrance in Tandridge Gardens which is a quieter residential road, however it becomes heavily congested with parked cars at our start and finish times.

Unfortunately there are frequent complaints from the residents in relation to parking as some of our parents can be inconsiderate and have been known to block driveways and access to property.
- Our catchment area.

The majority of our pupils live locally, most within 1 – 2 miles of the school. However in recent years we have noticed that some of our

families, having established places at the school, have moved further afield to Warlingham or Purley. We also currently have pupils who travel to Atwood from Epsom and Thornton Heath.

The school is served by the 403 bus route of which we make good use when travelling to rehearsals, performances and visits to Croydon.

This bus route is the only public transport route into Croydon close to the school. Sanderstead has a rail station but this is well over a mile away from our school, it can be reached by the 403 bus.

- Our staff car parks have 25 spaces, with 8 additional spaces on a grassed area, but these become unusable following prolonged spells of wet weather and are not used from November to April. Consequently one of our playgrounds is now used for parking once all proper spaces are full and this has caused a significant problem recently. Many of our staff live between 2 – 10 miles away. The use of public transport is difficult for teaching staff due to the nature of the job where work is regularly completed at home, having to transport sets of books, laptops, files, materials (e.g. science equipment), additional clothes for P.E. and gardening resources. The majority of our staff are women who require the security of leaving school in a car.
- Two sides of the school are bordered by common land; our entrance from Tandridge Gardens is also an informal access to this land.
- School opening and closing times - our school opens for Breakfast Club at 7.30am and our school timetable begins at 8.45am. The academic day closes at 3.15pm with our Extended School and After School Care closing at 6.00pm.

## SCHOOL ETHOS

- Atwood achieved Healthy School Status in January 2007 and has always taken a very positive approach to physical activity.
- We are in the process of applying for an Eco award as a result of our whole school approach to sustainability. We have developed gardening areas and this is now part of our Flagship School status in the Food for Life Partnership.
- Our involvement in WOW (Walk on Weekdays) has been actively encouraged by staff and parents. Our suggestion to parents in 2007 to create a walking bus was met with some considerable concern due to the volume of traffic on Limpsfield Road and Mitchley Hill.

## WHAT IS THE SCHOOL ALREADY DOING?

- As can be seen from our surveys, a number of families are making use of our 'Park and Stride' scheme with Waitrose to use their car park and walk from there. The children particularly appreciate this as it enables them to still be part of our WOW activities; the numbers of children who encourage their parents to do this has grown steadily as the pupils enjoy the rewards.
- However many only use it once a week in order to earn their badge. Our Junior Road Safety Officers have given some assemblies and actively encourage our pupils to take part in WOW.
- Our Year 6 pupils are offered the chance to take part in a cycling proficiency programme; however there are always restrictions on the number of pupils the scheme can accommodate. They also have an annual visit from Transport for London to assist with planning their future journeys for their transfer to secondary school.
- The school has had regular visits from Road Safety officers and parents are regularly reminded via newsletters about the dangers of parking on zigzag lines outside the school. Our neighbours on Limpsfield Road, the Methodist Church do allow our parents to use a small number of spaces in their car park at our start and finish times.
- We recently took part in the record breaking Walking Bus organised by Brake, the road safety charity, when every child in the school took part. (All the photos are on our website.)
- We have conducted surveys and questionnaires, put up posters and tried to involve every member of the school community in helping us.
- July 2009 – with our additional Reception class from September 2009 new arrangements for access to our Foundation Stage and Key Stage One areas will entail a new footpath.

## PART 2 – ISSUES AT THE SCHOOL

### SURVEY RESULTS

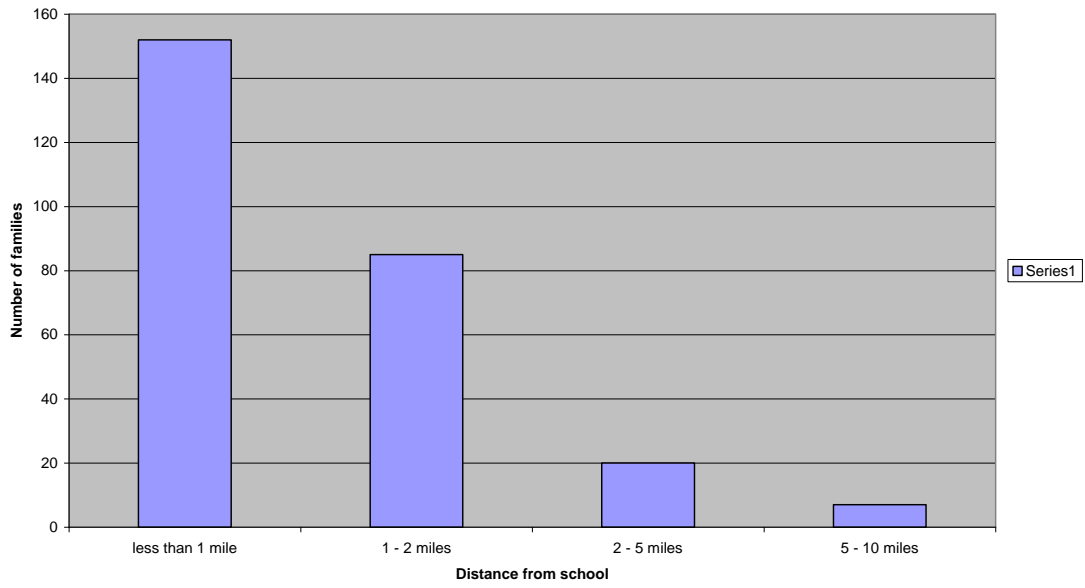
- In early June our pupils from Reception to Year 6 completed a survey, the majority of children travel to school by car. The reason given in most families is due to parents needing to travel on to work. The other reason is that it is too far to walk, the reason given by our pupils who live further than 1 mile away.
- A number of pupils commented that they would like to walk more often but either felt it was too difficult because of time constraints for their working parents or felt it was too far due to their distance from the school.
- Our parents completed a survey in October 2008 and we received 255 responses. The analysis of these surveys demonstrated that we have many families who try to encourage walking to school but feel restricted by the demands of their own work and travel arrangements. These families try to walk on certain days or make use of our arrangement with Waitrose. Of those who responded 157 (approx 60%) walk with their children on at least some days per week.

	<u>To school</u>	<u>From school</u>
On foot	157	137
Bus	6	9
Car with parents	167	169
Car with others	9	20
Bicycle	2	1

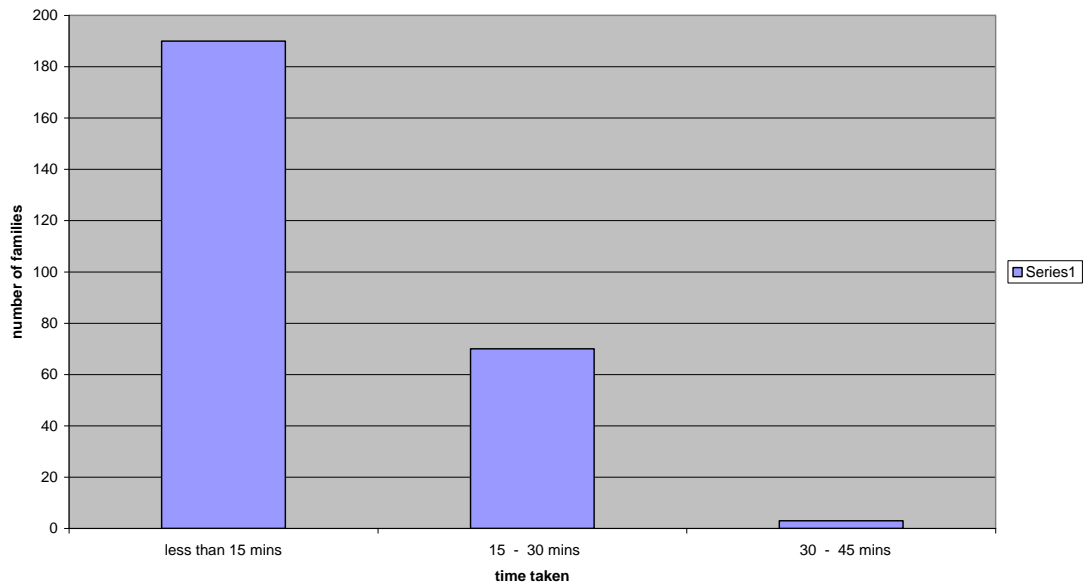
<u>Would prefer to change method of transport to/from school</u>	
Change to : on foot	122
Bicycle	43
Bus	3
Minibus	11
Taxi	1
School bus	2

- There was a keen interest in a Walking Bus from 141 of those who responded with 64 indicating that they might be able to volunteer to assist.
- In addition 66 people also expressed an interest in car sharing predominantly for taking children to school or for picking up, only 7 people felt they would benefit from using this to get to work.
- The most significant concerns amongst our parents are with regard to their children's safety. Many of them expressed concern about the crossing at the front of the school on Limpsfield Road, these included the congestion caused on the narrow pavement when families are waiting to cross, the time allowed for crossing, the impatience of drivers and failure of drivers to stop. There are also equally significant concerns about the junction of Mitchley Hill and Limpsfield Road where there is a mini-roundabout. Parents find this a very difficult crossing to negotiate. The other junction that causes almost as much concern is where Wentworth Way meets Limpsfield Road as parents feel drivers pay little attention to pedestrians.
- Our front and back entrances both give serious cause for concern. Our front entrance on Limpsfield Road is now used considerably more by parents bringing their children to Breakfast Club and before school activities. This creates congestion problems as the access is only wide enough for one vehicle and at times this has caused problems on Limpsfield Road. Tandridge Gardens also becomes congested with cars, parents expressed their concern over the speed of some cars and especially the fact that the road and pavements are never gritted in bad weather despite its use by many of our families.
- Most of our staff travel to school by car due largely, as previously mentioned, to their workload. In addition to this most of our staff live more than 2 miles from the school and would need to use at least two different bus routes.
- Car parking has become a major issue for our school. We are now actively involved in developing our school grounds to promote the 'outdoor classroom' as well as improving our play areas. The loss of one of our playgrounds as a car park is a serious problem. We must seriously investigate other possibilities but on street parking is not one of them due to the problems which already exist on Limpsfield Road. When the school redevelopment was completed in 1990/91 including the existing car parking spaces the number of staff working at Atwood was considerably lower than it is now. The Staff room was redesigned and expanded eighteen months ago to accommodate this increase in numbers. There is considerable feeling amongst staff that this issue needs to be similarly addressed.

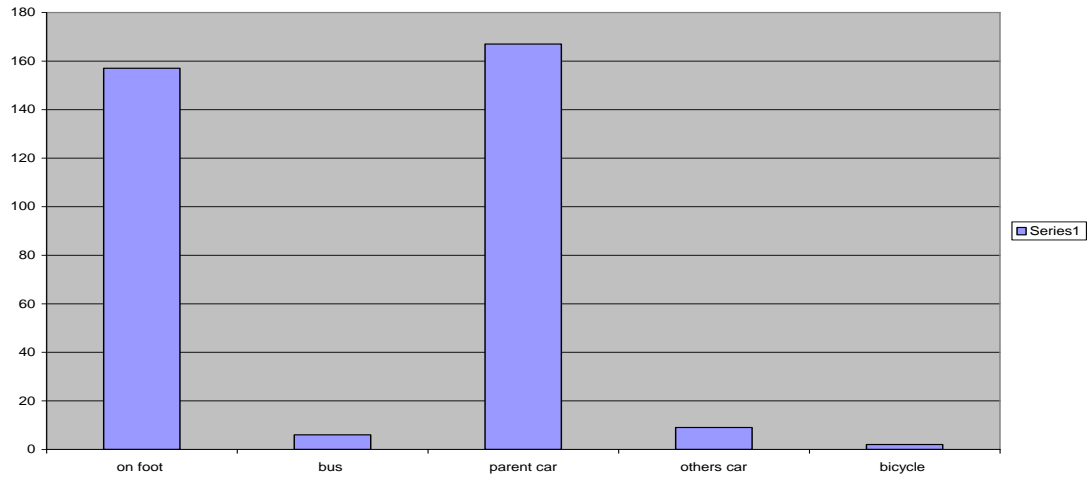
Where our families live



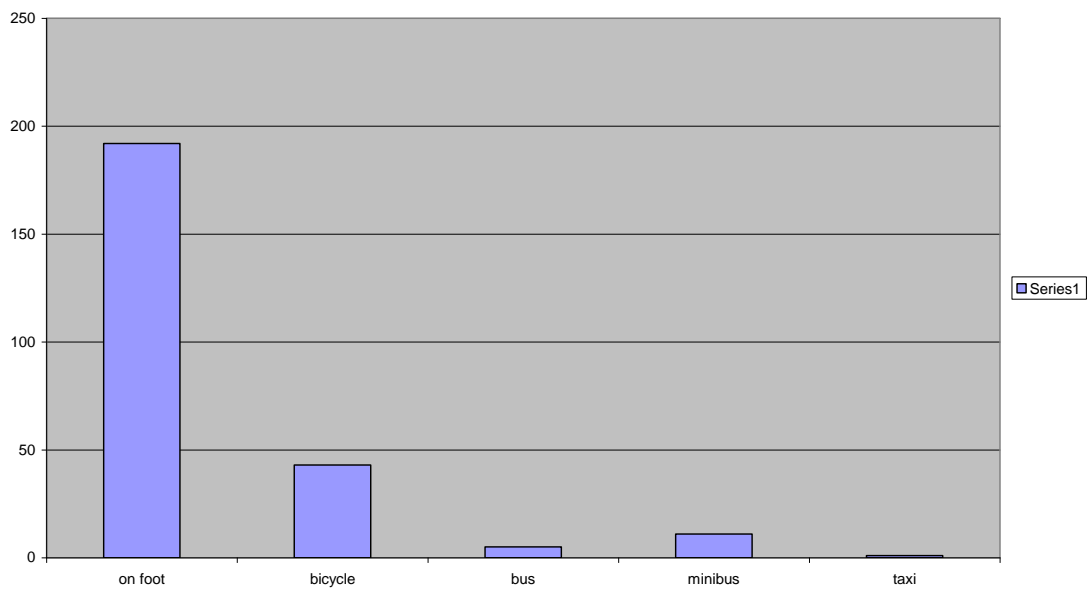
Journey times



Current methods of travel



preferred method of travel



## THE PROBLEMS AND ISSUES FOR THE SCHOOL

The main problems appear to be:

- ❖ Crossing at the pelican crossing on Limpsfield Road due to narrow pavements, hedging, Methodist Church car park entrance and motorists preferring not to stop. There is only a short time to cross for the numbers of children at peak times.
- ❖ Crossing at the junction of Limpsfield Road and Mitchley Hill by the mini-roundabout
- ❖ Crossing at the junction of Wentworth Way and Limpsfield Road
- ❖ Use of Tandridge Gardens – this lessens the number of children using the main entrance but creates other safety issues due to parked cars, cars turning in the road and lack of gritting in winter.
- ❖ Car parking facilities for the large numbers of staff etc who work at our school
- ❖ The main access to the school which is used by pupils and vehicles, with further Extended Schools provision the problems here can only increase. If the school becomes a Children's Centre which is a possibility this will also add to the problems.
- ❖ Encourage parents to respond to pupils' enthusiasm for walking by creating Walking Bus routes.
- ❖ July 2009 - A new issue for the school is the additional 30 families. Through promoting walking and cycling and the use of sustainable modes of transport we hope to reduce the impact on transport and routes to school in the area.

### **PART 3 – HOW HAS EVERYONE BEEN INVOLVED?**

#### **EVIDENCE OF CONSULTATION AND INVOLVEMENT**

Issues to do with our School Travel Plan have been the subject of debate with our pupils, parents and governors.

As previously stated our pupils were consulted individually during June; parents, staff and governors were consulted in October. Our School Council has been consulted on a number of occasions; our governors' Premises, Health and Safety Committee has also discussed the issues.

Assemblies have been held, led by staff and Junior Road Safety Officers involving road safety issues, the benefits of walking and playground improvements (relating to car parking).

Newsletters are regularly sent reminding parents of careful and considerate parking and our involvement in WOW. Our Head Teacher often discusses these issues with our Class reps group and the Healthy Schools Co-ordinator has also met with this group.

When we took part in the Record Breaking Walking Bus we received some very positive feedback from parents as it highlighted the campaign for 20mph limit in the area around schools.



## **Members of School Leadership Team**

Alex Clark (Head Teacher)  
Rob Veale (Deputy Head Teacher)  
Pamela Jacques  
Chris Evers  
Melanie Clarkson  
Kate Standing

## **PART 4 – WHAT YOU WANT THE STP TO ACHIEVE**

### Your Objectives

To continue to achieve the criteria for Every Child Matters.

- ✓ Be healthy – to walk regularly to and/or from school
- ✓ Stay safe – to apply for support in improving the safety of our pupils when using and crossing the roads in our vicinity
- ✓ Enjoy and achieve – to experience the pleasure of walking, the opportunities it presents for learning and awareness of the world around us
- ✓ Make a positive contribution – to be aware of the environment and the need for all of us to make a conscious effort to make those small steps that will add up to a large achievement
- ✓ Achieve economic well-being – to be aware of the improvements that need to be made to our outdoor environment and within the local community by discussing these needs and how they will be funded.

## **Your Targets**

In order to achieve these objectives we will need to plan a series of measures or targets to be achieved.

1. To include the School Travel Plan in the School Development Plan as of 2009
2. To include a commitment to walking to school in the school prospectus as of September 2009
3. Request support and funding from Safer Routes to School via LA – to investigate possibility of Puffin crossing on Limpsfield Road and safer crossings at junctions with Mitchley Hill and Wentworth Way. To be achieved by September 2009
4. In view of extended schools provision, investigate support and funding for the improvement of our school entrance to make it safer for children arriving for breakfast club and leaving after school clubs. To be achieved by April 2010
5. To investigate the possibility of providing a cycle shelter and requesting cycle paths in the vicinity of the school
6. To organise Walking Bus routes for those pupils whose parents indicated they would support this.
7. To install a controlled bollard and mobile fencing to block access to the playground/parking area during school time. This would make the playground a 'safe' playing area - to be achieved by September 2009.
8. To improve the number of parking spaces available for school staff – this needs to be looked at in relation to the planned building work for 2009 and proposed changes for 2010/11.
9. To include school travel plan issues as part of our Creative Curriculum planning for all year groups from September 2009.
10. To improve the access from Tandridge Gardens with lighting, fencing and signage – to be achieved by April 2010.

## PART 5 – HOW YOU ARE GOING TO ACHIEVE IT

### Your Action Plan

What	How	Who	When
Include School Travel Plan as part of School Development Plan	Identify and integrate our objectives within the SDP objectives	Head Teacher, Leadership Team, Governors	For Spring Term full Governing Body meeting
Include a commitment to walking to school in our school prospectus	Refer to this in parent meetings and tours during Autumn 08	Head Teacher	For new prospectus September 09
Safer crossing – Puffin – on Limpsfield Road	Request help from STA and Croydon Council	Travel Plan Co-ordinator	September 2009
Improve pupil and vehicle access to front entrance	Re-site pedestrian footpath to one side and widen vehicle access	Premises Committee	April 2010
Separate parking on playground from playing area – enable more controlled parking	Mobile fencing to separate parking area. Install bollard to prevent parking at certain times.	Head Teacher and Travel Plan Co-ordinator	September 2009
Create additional parking spaces – possibly by extending parking area adjacent to our Nursery	Request help from LA and other suitable agencies for advice and planning.	Head Teacher, Premises Committee, Travel Plan Co-ordinator	September 2010
Include travel plan issues in our new Creative Curriculum planning	Through cross-curricular planning identify the travel issues that will be relevant and to which subject areas	Deputy Head and Travel Plan Co-ordinator	Beginning Sept 2009 with full implementation by Sept 2010
Improve rear entrance in Tandridge Gardens	Improve footpath, lighting and signage	Premises Committee, Head Teacher	April 2010

Establish at least one walking bus route	Through parent meetings – use video from STA – organise one safe route to school	Head Teacher, Travel Plan Co-ordinator	April 2009
Continue WOW	Keep the profile of WOW high through assemblies, cards and badges	Travel Plan Co-ordinator and JRSOs	Throughout 2008/09
Continue involvement with cycle training	Arrange cycle training weeks for as many pupils as possible	Travel Plan Co-ordinator	During next academic year dependent on availability
Investigate possibility of a site for a cycle shelter and lockers.	Premises Committee to look at school site for possible locations	Premises Committee	September 2010

## **PART 6 – HOW YOU ARE GOING TO MONITOR PROGRESS**

### Monitoring

The surveys will be repeated in October 2009, 2010 and 2011. The three year rewrite of the Travel Plan will take place in February 2012. Progress reports will be submitted in September 2009 and 2010.

The Healthy Schools Co-ordinator and Travel Plan Co-ordinator will be responsible for ensuring that annual surveys take place and the review is completed.

The review will consider pupil travel needs arising from new developments in education and transport provision.

A portfolio of evidence will be compiled beginning with the surveys and other documentation used to create this travel plan. It will be added to with further surveys, letters, plans etc used to fulfil our objectives.

